

Independent Remuneration Panel

Summary

In comparison to the last time the Panel undertook a review, 24 of the 36 members returned questionnaires (in 2019 25 out of the 36 members participated). Questionnaires were both emailed and posted out to every member; members were asked to return questionnaires by Friday 7 October 2022.

A copy of the questionnaire was left on the chair of every member who had not yet completed at Full Council on Tuesday 27 September and Planning Committee on Wednesday 5 October. A further email request went out on Wednesday 12 October extending the deadline to Monday 17 October for those who had not already completed.

Of the forms returned 13 were completed by members who receive a Special Responsibility Allowances.

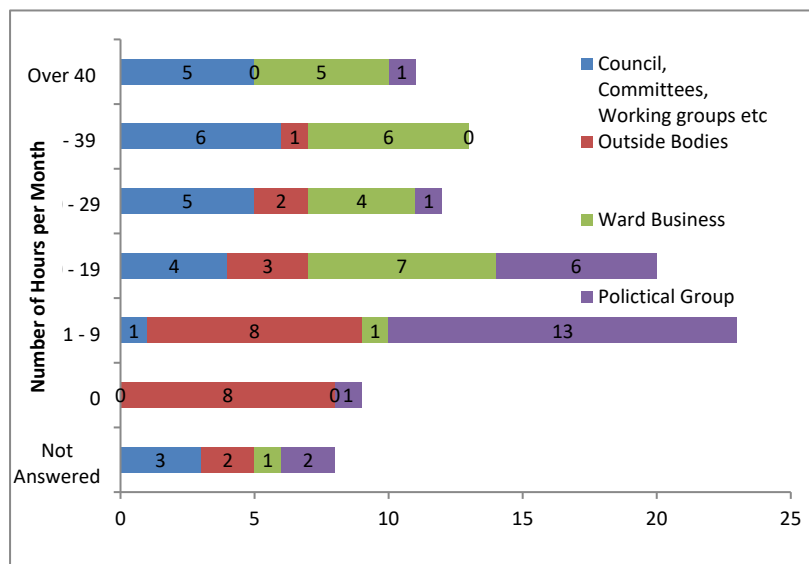
The table below shows a breakdown of the returns on a party-by-party basis

Party	Returned/total membership of party
Conservatives	13/17
Liberal Democrats	7/11
Green	1/2
Labour	0/1
Local Alliance Party	1/2
Independent	2/3

Independent Remuneration Panel

Part A – Time spent as a Councillor

Q1. How many hours per month would you estimate that you spend on each of the following District Council activities, NOT attributable to any Cabinet role, Chairmanship or other Special Responsibility you hold?



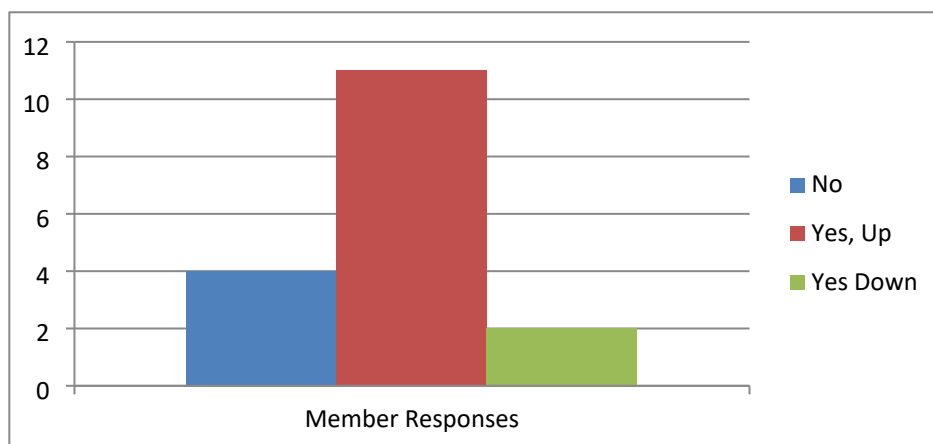
The above bar chart shows a breakdown of the hours members spend on the different activities, as can be seen the least number of hours is spent carrying out work on outside bodies (only 10 members who responded hold external appointments); most time is spent dealing with ward business and attending council, committees and work groups.

The table below shows the total number of hours and average number of hours spent by members' carrying out different District Council activities. The responses to the hours spent on Council business varied dramatically with one member spending around 200 hours a month undertaking Council business, compared to another who spends only 12.5 hours each month.

	Council, Committees, Working Groups etc	Outside Bodies	Ward Business	Political	Total hours spent on all Council Business
Total hours spent	710.5	169	618	189	1686.5
Average hours spent *(total hours/number of responses)	34	8	27	9	73

Q2) If you were a member of Chichester District Council in 2015, do you believe the time commitment has changed since then?

Of the questionnaires returned 17 were from returning councillors



As can be seen in the chart above the majority of returning members feel that the time commitment has increased.

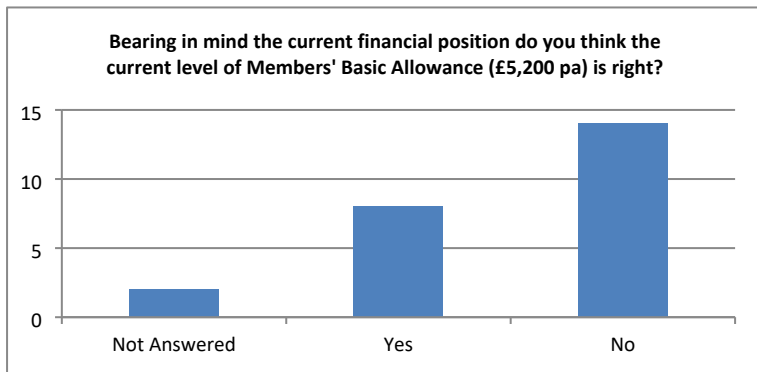
Q3) How many hours per month would you estimate that you spend on District Council activities THAT ARE attributable to any Cabinet role, Chairmanship or other Special Responsibility that you hold?

There are 14 Special Responsibility Allowances of the 14 members who hold a Special Responsibility 13 completed the questionnaire.

Special Responsibility	Additional Hours
Chairman	17.5
Leader	Rarely off duty
Leader of Opposition	35
Member of Cabinet	70
Member of Cabinet	36
Member of Cabinet	100
Member of Cabinet	15
Chairman of OSC	16
Chairman of CGAC	5
Chairman of Planning com.	4
Chairman of Licensing	2
Chairman of Standards	4

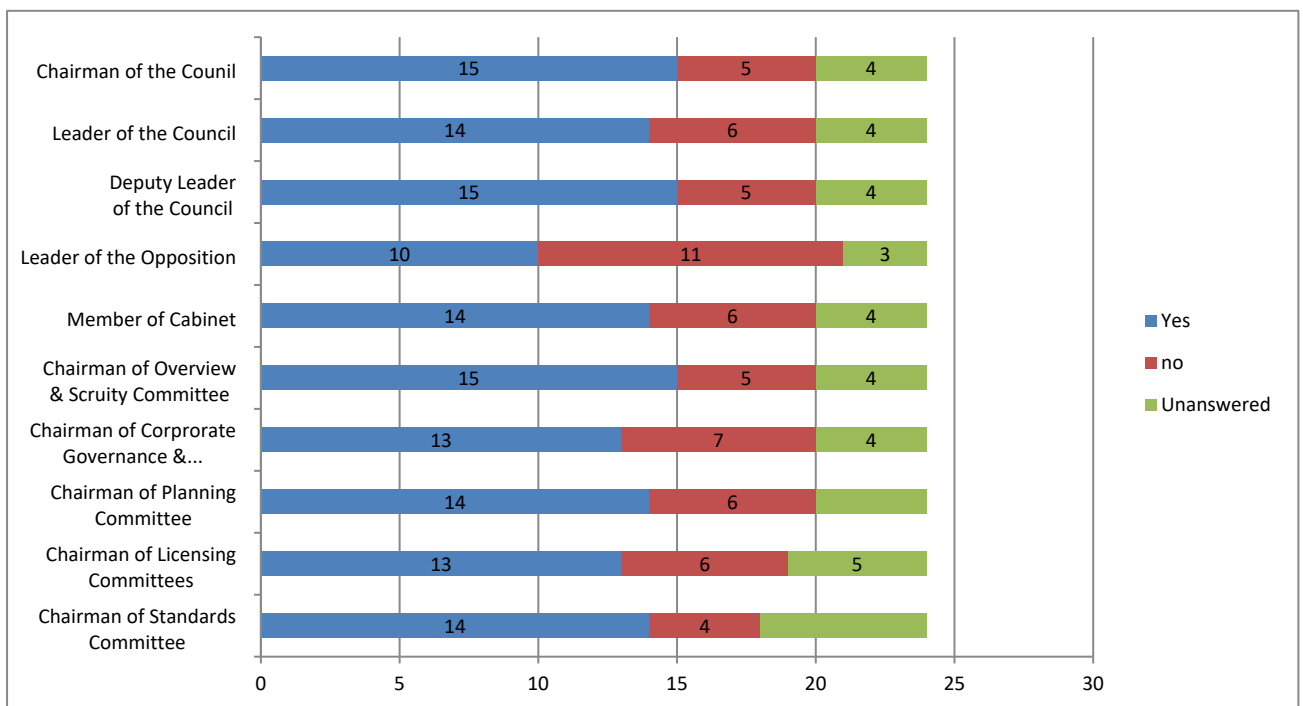
Part B. Your Views

1. Members' Basic Allowance; Bearing in mind the current financial position do you think the current level of Members' Basic Allowance (£5,200pa) is right?



The table above demonstrates the majority of members believe that the Members' Basic Allowance was not rights. Figures suggested ranged from £4500 to £18,000.

Q2. Special Responsibility Allowance – Do you think the current levels of special responsibility allowances are right?



In response to who else should receive an SRA, the following roles were suggested; the Deputy Chairman of the Council (£2000) and individual Group leader (£500)

Q3. Travelling and Subsistence Allowances

	Yes	No	Not Answered
Should travel allowances be paid for meetings?	21	1	2
Should subsistence allowances be paid?	21	1	2
Should the levels of travelling and subsistence allowances continue to be paid the same as paid to staff?	16	0	8

Maximum Reimbursable Allowances

Travel Allowance for:	Yes	No	Not Answered
Motor Cars – basic 65p per mile (up to 8,500 miles per annum)	18	0	6
Motor Cars – with CO ² emissions less than 135g/km 65p/mile, plus 5p	17	1	6
Motor Cars – members drive member(s) or officer(s) on official Council duties – extra 5p per mile per passenger	13	5	6
Motor Cars – Travel to seminars/conferences and training courses held outside of the district 34p per mile	14	4	6
Motorcycle – 24p per mile	15	1	8
Cycles – 20p per mile	13	5	6

Main Subsistence Allowances for:	Yes	No	Not Answered
Breakfast Allowance - £9.11	15	3	6
Lunch Allowance - £12.48	16	2	6
Tea Allowance - £4.97	12	6	6
Evening Meal Allowance - £15.10	16	2	6
Out of Pocket Allowance for residential courses - £7.06	12	6	6
Do you think that travelling expenses should be paid for attendance at party group meetings where council policy is discussed (Provided there are safeguards to prevent abuse)?	12	8	4
Do you think that future levels of Members' Travelling Allowances should be paid for any other duties that are not currently covered?	3	12	9

Q4. Indexation

